

GETTING HELP

Hopefully this booklet has given you an insight into the training and qualifications you could do once you have completed your Apprenticeship training.

If you would like to find more information on Higher Education the websites on the previous page will be a good starting point.

Consider some of the following when doing your research:

- * What qualifications do I need to have to get on to a particular Higher Education course?
- * How much will the course cost and how do I pay for the course?
- * Which Higher Education Institution should I choose?
- * Can I get some work experience in the job I'm considering before committing to the training?
- * How and when do I apply?

Making the decision to apply to Higher Education could be a life changing event. However, if you want to make sure you consider all the options and choose the right course, consider getting some help.

Connexions Northumberland provides confidential and impartial Information, Advice and Guidance to young people aged 13 – 19 years of age. You can arrange to see a personal adviser who can help you explore all your options and make sure the choice you make is the right one for you. Telephone your nearest centre and arrange an appointment.

Connexions Centres

Main Centres

Ashington Connexions Centre
Tel: 01670 811040

Hexham Connexions Centre
Tel: 01434 607097

Blyth Connexions Centre
Tel: 01670 798180

Part-Time Centres

Alnwick Connexions Centre
Tel: 01665 605982

Cramlington Connexions Centre
Tel: 01670 735653

Bedlington Connexions Centre
Tel: 01670 823267

Morpeth Connexions Centre
Tel: 01670 511666

Berwick Connexions Centre
Tel: 01289 331823

Prudhoe Connexions Centre
Tel: 01661 834620

You can also get information and advice from Connexions Direct by phoning
Tel: 080 800 13 2 19 or visiting their web site at: www.connexions-direct.com.



PROGRESS TO SUCCESS IN HEALTH AND SOCIAL CARE

Progression routes for apprentices in Northumberland

aimhigher...
Northumberland



WHAT IS PROGRESS TO SUCCESS?

This booklet is for Apprentices, Advanced Apprentices and people studying vocational qualifications.

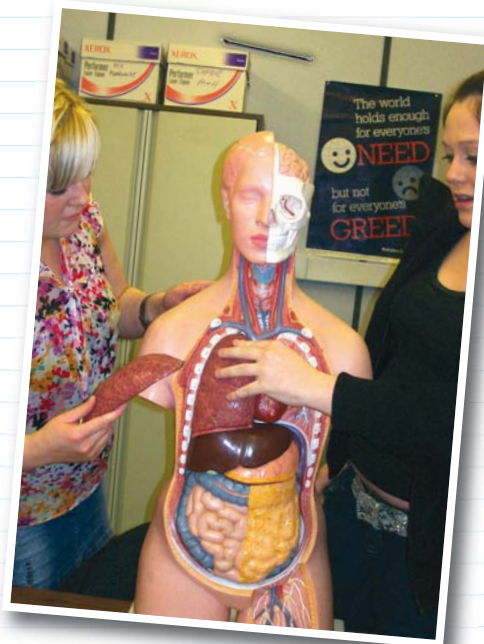
You decided that work and training was better for you than full-time education. By now you should have a good idea about the world of work and the types of jobs people do in your industry. You will have improved your own skills and knowledge and gained loads of experience that employers will really value. Completing your Apprenticeship will be a great achievement, but it doesn't have to be the end of your learning. Have you thought about what you could do once your Apprenticeship is over?

You could increase your skills by further training and study.

This booklet will look at the opportunities available to you locally, to increase your qualification level in Health and Social Care. It will explain some of the benefits you may gain by doing this, provide information on who offers qualifications locally and who can help you explore your options in more detail.

Qualifications at Level 4 or above are classed as Higher Education

Higher Education can be studied at universities, colleges, in the work place or by distance learning.



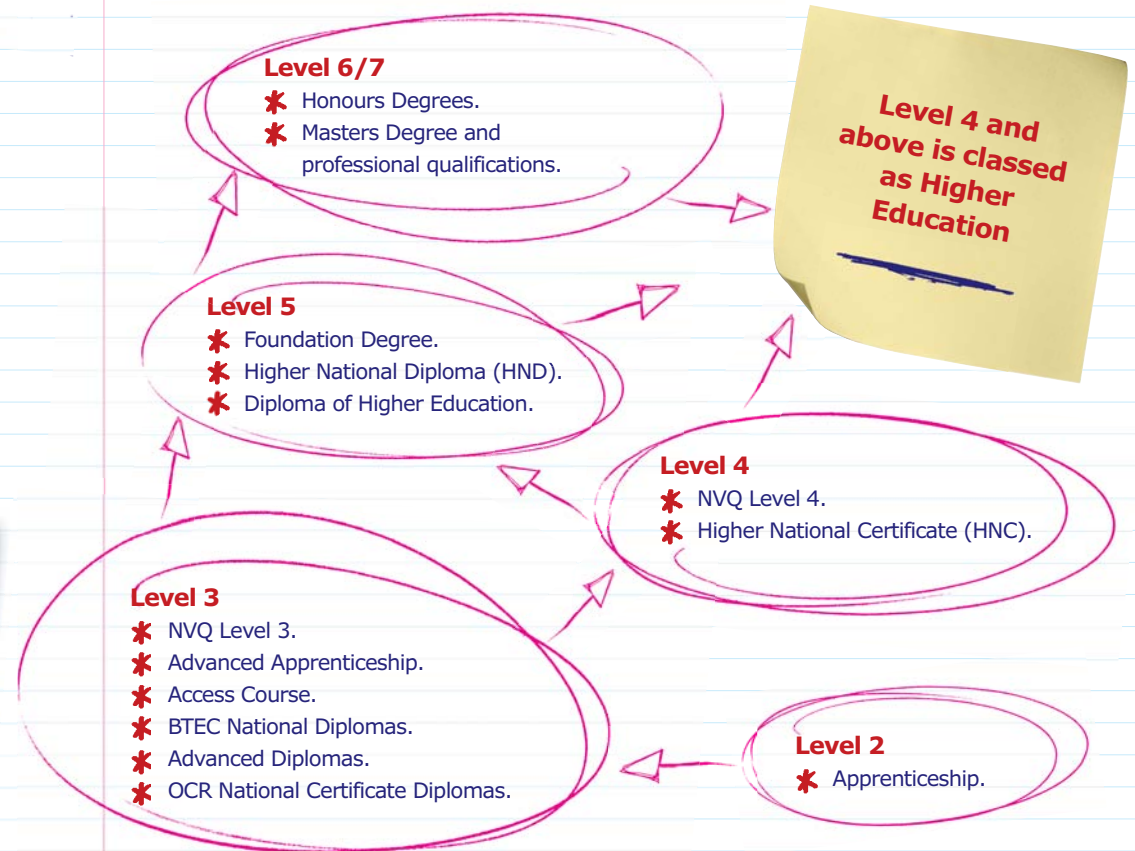
What can you do after your Apprenticeship?

Honours Degree

The most common type of qualification in Higher Education.
Normally based on one or two subjects.
3+ years full-time
5+ years plus part-time
After this you could do a Masters Degree or PHD

Foundation Degree

A type of degree that includes academic and work-based learning.
Can be studied full or part-time.
Many Foundation Degrees allow you to complete an extra year and convert this to an Honours Degree.



HND – Higher National Diploma

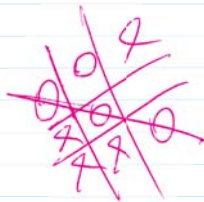
A Higher Education qualification which involves completing practical vocational training that prepares the student for a career in a particular area. You could top up this qualification to an Honours Degree

Access Course

A set of courses offered at local colleges that allow adults (19+) to gain the qualifications needed to enter university. They can be studied full-time or part-time. Northumbria University run local courses and encourage people on Access Courses to apply for Higher Education if they meet the entry requirements.

Aimhigher...
Northumberland

HEALTH AND SOCIAL CARE IN THE NORTH EAST



What's out there for me?

- * The Health and Social Care sector employs over 140,000 people in the North East of England, that's about 11% of the available workforce.
- * Approximately 19,600 (14%) people currently in the health care workforce will retire by 2013, so there will be plenty of opportunities in the near future for work in this sector at all levels.

Information from NHS North East.
A portrait of the health and social care workforce in the North East. 2008

The care sector is made up of organisations such as the NHS, local authorities, private companies and charities. There are jobs locally in areas such as:

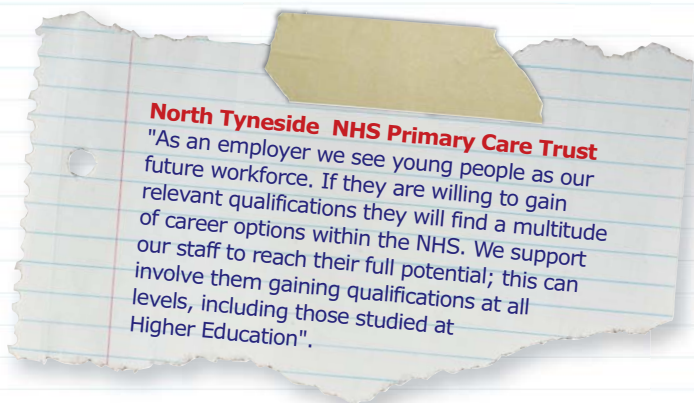
- * Children's Homes
- * Care Homes
- * Day Centres
- * Social Work
- * Hospitals
- * Adoption Services
- * Secure & Offender Accommodation
- * Educational Welfare
- * Community Justice
- * Supported Housing.

What employers say they want

The most reported skills shortages are:

- * Communication Skills
- * Team Work
- * IT Skills
- * Health and Safety Skills

Did you know employers find it hard to fill vacancies in youth work, social care and health care? The reason for this is potential employees do not have the (basic or high level) skills and experience or qualifications required.



Information from Skills for Health.
Regional LMI Report: North East of England March 2008

Why should you consider further training & qualifications?

Employers pay higher wages to people with skills and qualifications that:

- * Take longer to learn.
- * Are in short supply.
- * Are specialised, for example a paramedic.
- * Are important to their business.



Gaining skills and qualifications that employers need is a good investment of your time.

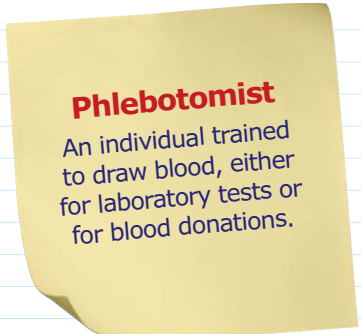
In the table below you will see some examples of jobs at different levels and the average pay for each job. Generally speaking it shows that the higher your level of qualification, the more employers are willing to pay you.

Occupational Area	Average Annual Pay (for UK)	Level of Qualification
Care Assistants and Home Carers	£12,500 - £15,500	Level 2 or above
Phlebotomist	£12,922 - £15,950	Level 2 or above
Social Work Assistant	£14,000 - £21,000 depending on experience	Level 3 or above
Residential Care Managers	£24,000 - £25,500	Level 4 or above
Nursing and Allied Health Professions	£19,500 rising to £25,000 with experience	Level 4 or above
Social Worker	£18,000 rising to £29,500 with experience	Level 4 or above
Drug and Alcohol Worker	£20,000 - £25,000	Level 4

These pay scales are average across the UK in 2008. Different employers and regions may offer different rates of pay. In the NHS pay is standard across the country.

Gaining more qualifications isn't just about better wages. Research has shown that people with higher level qualifications, especially those gained at university will:

- * Gain more promotions at work.
- * Be less likely to be unemployed.

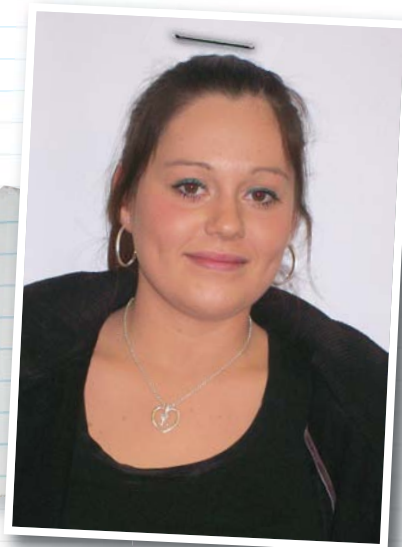


Aimhigher...
Northumberland



CASE STUDIES

Katie left school after Year 11. She enrolled at college on a BTEC Introductory Diploma in Health and Social Care. This wasn't challenging enough for Katie; she swapped courses and is now doing a Level 2 Apprenticeship in Health and Social Care. **"In the future I hope to gain the qualifications required to go on to Higher Education and train to be a Mental Health Nurse".**



Ross is one of a growing number of men choosing a career in the Health and Social Care sector. He is currently on a Level 2 Apprenticeship in Health and Social Care at Northumberland College. **"My ambition is to build on my current qualifications and experience. Eventually I hope to enter Higher Education and study a nursing qualification".**

Pat's doing it, could you?

3rd year student on the Bsc (Hons) Degree Social Work
My route into Higher Education started with the NVQ Level 3 in Adult Care. I really enjoyed the training and it gave me confidence to carry on with my education. I found my local college was offering Higher Education Foundation Courses (HEFCs are an Access Course, see page 2) part-time in the evenings. I successfully completed this course and applied to Northumbria University. I will shortly finish my degree course and hopefully find a job as a qualified social worker.

5

Want more information on what's out there?

Health and Social Care Websites

www.socialworkcareers.co.uk
The Social Care and Social Work Careers Information website

www.nhscareers.nhs.uk
NHS Careers Information website that includes current job vacancies

www.stepintothens.nhs.uk
NHS Careers Information website for young people

www.yjb.gov.uk/en-gb/yjs/GetInvolved/Careers
Information about careers in The Youth Justice Board

Higher Education Information

www.aimhighernorthumberland.co.uk
General information on Higher Education

www.ucas.com
The site for applying to full-time Higher Education

www.iwant2b.org.uk
Create your own career route

www.foundationdegree.org.uk
Information on Foundation Degrees

www.studentfinanceengland.co.uk
Information on grants, loans and fees for Higher Education

Universities, Colleges & Training Providers

www.northumbria.ac.uk
Northumbria University

www.newcastle.ac.uk
The University of Newcastle

www.sunderland.ac.uk
The University of Sunderland

www.northland.ac.uk
Northumberland College

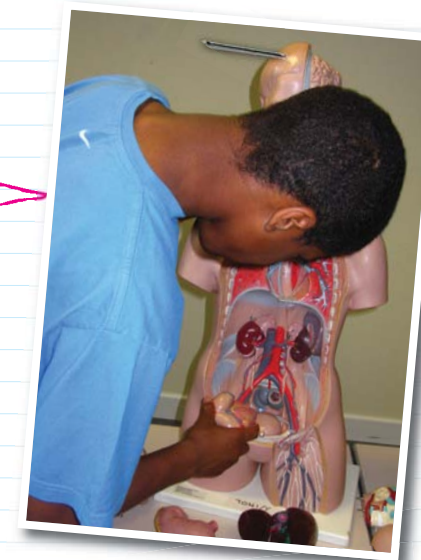
www.ncl-coll.ac.uk
Newcastle College

www.tynemet.ac.uk
Tyne Metropolitan College

www.northumberland.gov.uk
Northumberland Adult Learning Services
(Click on young people in the menu)

www.necc.co.uk
North East Chamber of Commerce

www.zodiactraining.co.uk
A local provider of Health and Social Care Apprenticeships



For all local course information in Northumberland and Tyne and Wear check out:
www.northumberland.1419.org.uk

6